

## GALERIE MIGHELA SHAMA

**ALFREDO ACETO, CHLOÉ DELARUE, CLÉMENT GRIMM, THOMAS LIU LE LANN,  
FINN MASSIE, ELIOT MÖWES AND DENIS SAVARY**  
*GALERIE MIGHELA SHAMA X HIT*

Opening: Tuesday March 19<sup>th</sup> 2024, 6-8pm  
Exhibition: From March 20<sup>th</sup> to May 31<sup>st</sup> 2024

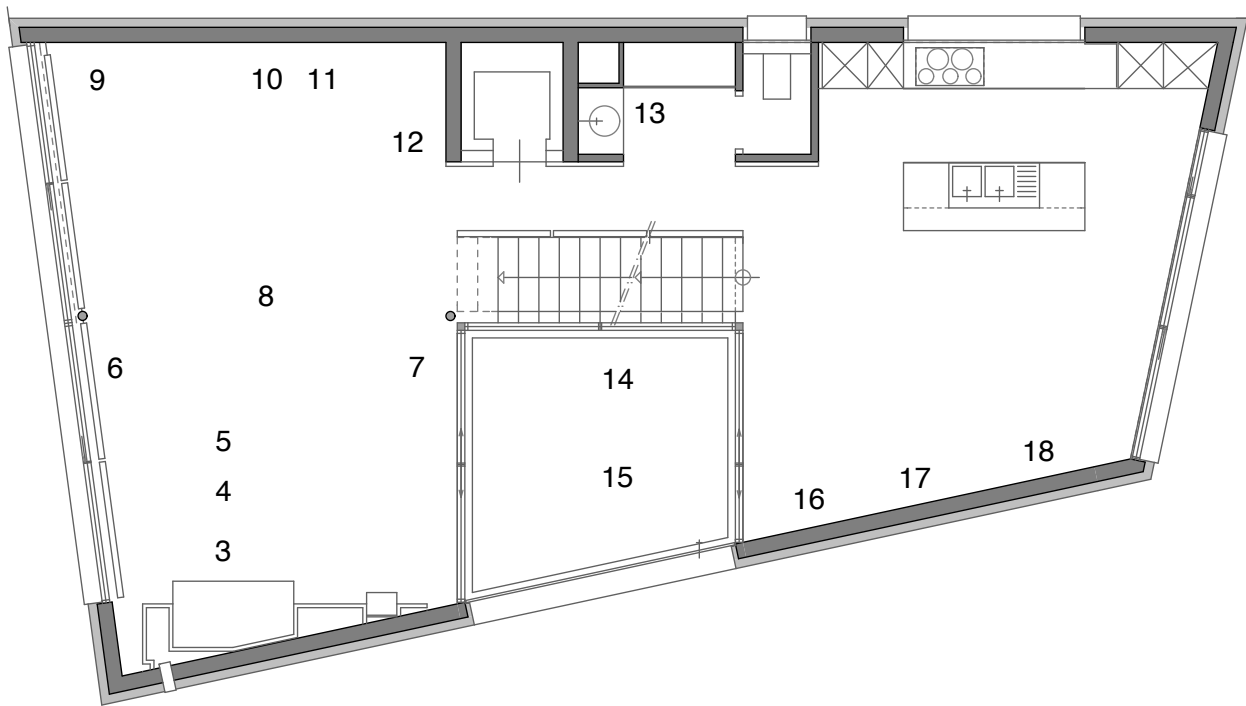
### OUTDOOR FACADE

1. Clément Grimm, *Port de L'Aquarama*, 2024, Forex, 65 x 350 cm

### GROUND FLOOR

2. Alfredo Aceto, *Girotondo*, 2023, Inkjet print on wood, motor, 66 x 53 x 5 cm

### FIRST FLOOR



3. Eliot Möwes, *Smoke Trick*, 2024, Acrylic on linen, 190 x 240 cm
4. Clément Grimm, *Hollywood Bubblegum (Daybed IV)*, 2024, Foam, imitation fur, steel, 78 x 180 x 57 cm
5. Clément Grimm, *Office World (Daybed III)*, 2024, Foam, jersey, steel, 78 x 180 x 57 cm
6. Clément Grimm & Alessandro Di Lorenzo, *I Only Have One Idea*, 2024, Telescope, battery, motor, 190 x 90 x 90 cm
7. Chloé Delarue, *TAFAA - UNNECESSARY DOUBT (SNITCH)*, 2024, Latex, print transfer, resin, 240 x 90 x 15 cm
8. Clément Grimm, *Glassworks - Expanded Edition*, 2024, Seven different glass works, Variable dimensions
9. Alfredo Aceto, *Tongue Twister XXIV*, 2022, Inkjet print on cotton paper, frame, Edition 1/3 + 2AP, 46 x 66 cm
10. Thomas Liu Le Lann, *Huludao*, 2022, Inkjet print on cotton paper, frame, Edition 1/3, 32 x 24 cm
11. Thomas Liu Le Lann, *Untitled*, 2022, Inkjet print on cotton paper, frame, Edition 1/3, 40 x 30 cm
12. Alfredo Aceto, *Fin-Furniture V*, 2020, Wood, foam, wadding, imitation leather, 67 x 36 x 8 cm
13. Alfredo Aceto, *Tongue Twister XIV*, 2022, Inkjet print on cotton paper, frame, Edition 1/3 + 2AP, 25.5 x 17 cm
14. Denis Savary, *Bugatti I*, 2023, Fibreglass, resin, 86 x 260 x 55 cm
15. Denis Savary, *Bugatti II*, 2023, Fibreglass, resin, 134 x 168 x 78 cm
16. Finn Massie, *Untitled*, 2024, Oil, acrylic, tempera, soft and dry pastel on canvas, 160 x 120 cm
17. Finn Massie, *Untitled*, 2024, Oil, acrylic, ink, soft and dry pastel on canvas, 160 x 120 cm
18. Finn Massie, *Untitled*, 2024, Oil, acrylic, ink, soft and dry pastel on canvas, 160 x 120 cm

## GALERIE MIGHELA SHAMA

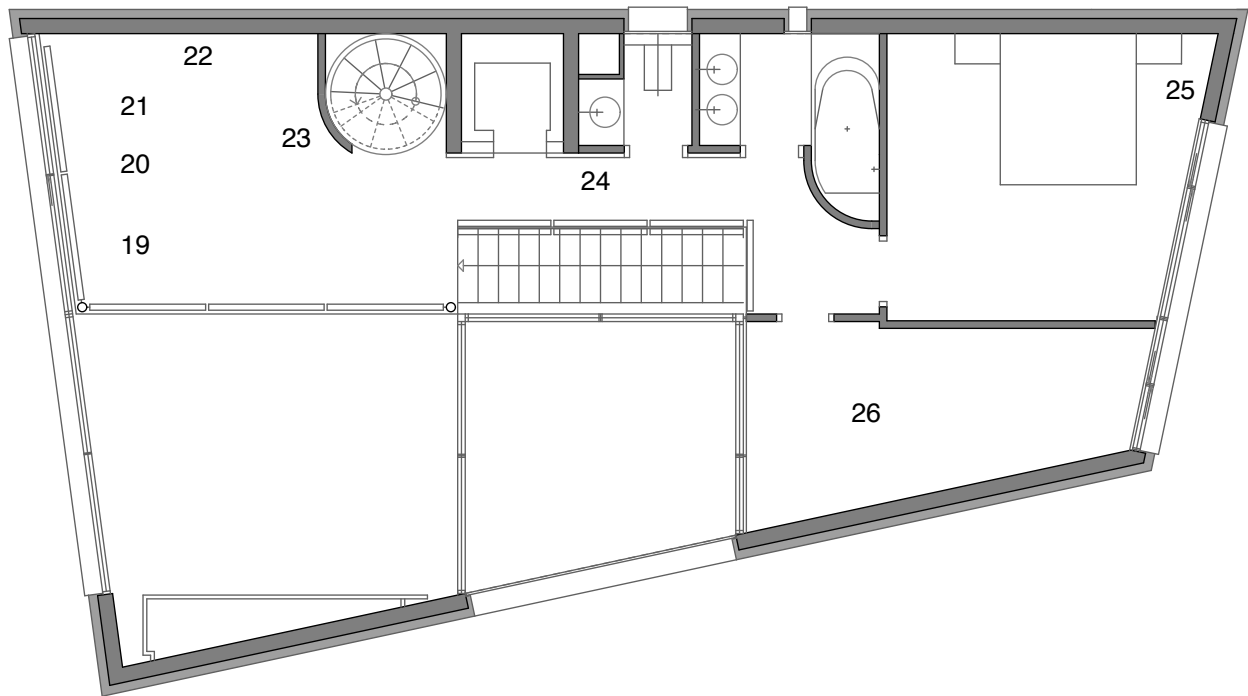
**ALFREDO ACETO, CHLOÉ DELARUE, CLÉMENT GRIMM, THOMAS LIU LE LANN,  
FINN MASSIE, ELIOT MÖWES AND DENIS SAVARY**

*GALERIE MIGHELA SHAMA X HIT*

Opening: Tuesday March 19<sup>th</sup> 2024, 6-8pm

Exhibition: From March 20<sup>th</sup> to May 31<sup>st</sup> 2024

### SECOND FLOOR



19. Pirates Gallery L.A. & Anne Minazio, *Daybed I*, 2023, Acrylic painting and felt pens on canvas, double-sided mattress, 78 x 180 x 57 cm  
20. Denis Savary, *Cylindre III*, 2023, Clay, enamel, double-sided, 36 x 33 cm  
21. Thomas Liu Le Lann & Anne Minazio, *Bucket 8*, 2021, Clay, engobe, enamel, platinum, 30.5 x 44 x 25.5 cm  
22. Finn Massie & Anne Minazio, *Untitled*, 2024, Oil, acrylic, tempura, pencil, soft and dry pastel on canvas, 140 x 200 cm  
23. Thomas Liu Le Lann, *Levitrax 2007*, 2021, Wood, foam, wadding, cotton, pvc, 140 x 12 x 65 cm  
24. Alfredo Aceto, *Fabian Marti*, 2022, Inkjet print on cotton paper, frame, Unique, 57 x 68 cm  
25. Thomas Liu Le Lann, *tropical sex*, 2018, Colour video, sound, Edition 1/3, 16'38''  
26. Eliot Möwes & Clément Grimm, *Pare-Brise*, 2024, MDF wood, 110 x 100 x 60 cm

### ROOFTOP

27. Chloé Delarue, *TAFAA – ENDLESS SUMMER*, 2020, Electrical cables from burnt-out cars, resin, sodium bulb, ballast, Variable dimensions